



3744 N. US 31 SOUTH | TRAVERSE CITY 49684 | 231-947-6561

PG-#2

Rochester / 26' Ranch Modular

State Code (RBC) "BOCA" Modular Home

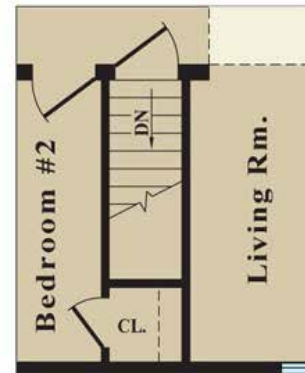
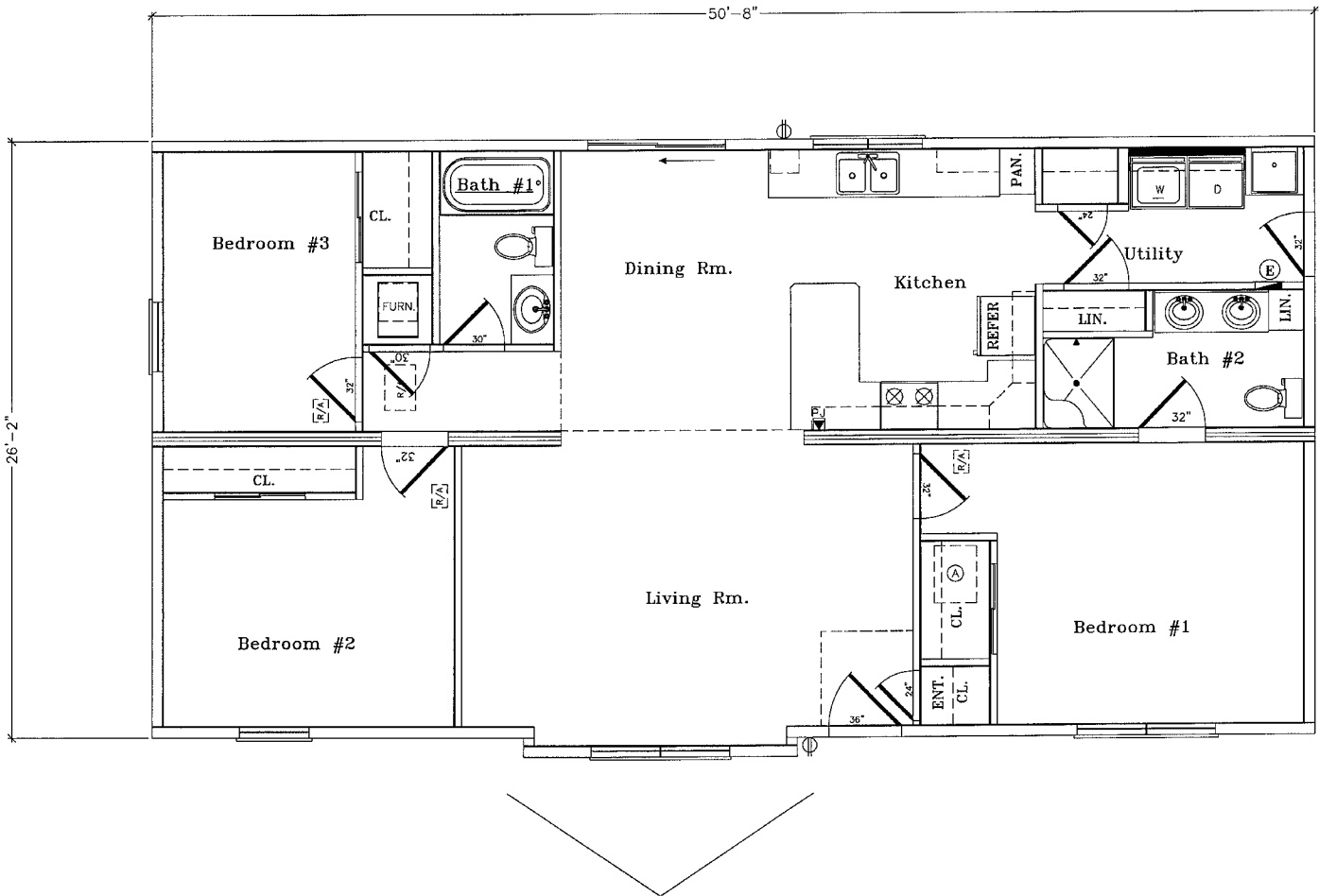
26'2"X50'8"

1300 sq ft

12500

AR-4-26

Serial # TBA



OPT. BASEMENT
STAIRWELL LAYOUT

*Artist Representation May Show Options Not Included In Price
See Reverse for Optional Equipment Shown on Lot Model*

PINE GROVE HOMES

3744 N. US 31 SOUTH - TRAVERSE CITY 49684

231-947-6561



PG-#2

Rochester / 26' Ranch Modular

State Code (RBC) "BOCA" Modular Home

26'2"X50'8"

AR-4-26

1300 sq ft

12500

Serial # TBA

3744 N. US 31 SOUTH | TRAVERSE CITY 49684 | 231-947-6561

Base Price		\$73,800.00
6/12 Roof Pitch - 16" O.C. 70#		\$1,530.00
Add Footage - 32" in Utility		\$2,000.00
Bump Out - Ranch Gable w/out foor return		\$1,100.00
Labor for Gable Build		\$750.00
Make BR1 closet deeper		\$50.00
Install interior doors to floor		\$50.00
Make Linen in Util Deeper (see print)		\$50.00
Furnace - Trane Gas - Main Duct Not Included		\$2,150.00
Furnace LP Conversion		\$40.00
R-50 Blown Attic Insulation		\$306.00
R-21 Batt Exterior Wall Insulation		\$204.00
Additional Cabinets in Utility		\$850.00
Additional Linen Cabinet BA2		\$425.00
Trim Package A - White Doors & Trim		\$393.00
Carpet Upgrade - "Go Softly"		\$854.25
Shower C in BA2		\$215.00
Outside Faucet		\$75.00
Double Lavs BA2		\$200.00
Upgrade Toilet - Comfort Height - BA2		\$175.00
Smoke Detectors and Carbon Monoxide		\$180.00
Tamper Resistant Recepts		\$110.00
GFCI + Arc Faults per MI Code		\$125.00
Light Over Kit Sink on Separate Switch		\$30.00
Double Window over Kit Sink		\$390.00
Ext. Door 9 Lite Steel		\$75.00
Patio Door - 2 Panel Sliding with Screen		\$500.00
Ext Door Upgrade - Craftsman 6 lite		\$250.00
Appliance Package "A"		\$1,350.00
Laundry Tub		\$250.00
Carrier Use Fee		\$700.00
Options Sub-Total		\$ 13,677.25
State Taxes on Options		\$820.64
Total Options		\$15,250.00
Total Home as Shown		\$89,050.00
<i>Prices Include Delivery and Set on Buyer's Approved Foundation - Artist Representation May Show Options Not Included In Price</i>		
PINE GROVE HOMES 3744 N. US 31 SOUTH - TRAVERSE CITY 49684		
231-947-6561		